

# What's on in the Summer Holidays 2018

Summer programme starts on July 25th and runs until September 7th

All sessions in Sure Start Children's Centres unless specified.

## Regular Groups

### Self-Weigh

Tuesdays at The Children's Centre, 9.30am-10.30am. Weekly

### Baby Group

Wednesdays at The Children's Centre, 11.00am-12.00pm. August 1<sup>st</sup>, 8<sup>th</sup> & 15<sup>th</sup>



### Child Health Clinic

Friday, 3<sup>rd</sup> August, 9.30am-10.30am at The Children's Centre

Monday, 20<sup>th</sup> August 11.30-12.45pm at Reffley Community Centre



### Story & Rhyme

Thursday 9<sup>th</sup> August, 1.00pm-1.45pm  
at The Children's Centre

### Mobile Library

Thursday 9<sup>th</sup> August, 1.45pm-2.14pm  
St Edmundsbury Road

### Teddy Bears Picnic

Monday 13<sup>th</sup> August, 12.00pm-1.30pm

Reffley Academy School

Please bring your lunch and a teddy bear. Weather permitting; check our Facebook on the day. Parking available in the school car park, the main gate will be open.



### Messy Play

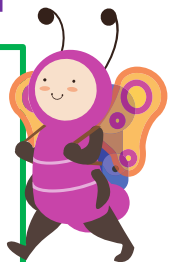
Thursday, August 23<sup>rd</sup>, 1.00pm-2.30pm

at The Children's Centre

Thursday, August 30<sup>th</sup>,

11.00am – 12.30pm

at The Children's Centre



## What is a Sure Start Children's Centre?

Sure Start Children's Centres support children and babies of all abilities, their parents / families, and parents-to-be.

Our aim is to help babies and young children to develop in the best way they can - physically, socially and in their early learning too - so that they can flourish at home, and when they go to school.

We do this by bringing together health and family support services, childcare and early education, to work with and for families with children under 5 years-old.

Sure Start services include:

1. Child and family health services – including health visiting and midwifery
2. Support for parents – including advice on parenting, local childcare options and access to specialist services for families
3. Integrated early education and childcare
4. Helping parents into work – with links to the local Jobcentre Plus and training

## Are you registered with Sure Start?

We'd like to keep you informed of our activities and the services we can offer you. We also appreciate having some information about the families who use our services to ensure that we are meeting your needs.

You can register with our local Sure Start Children's Centres by calling the centre nearest to you and requesting a registration form.

## Tell us what you think

If you would like to be involved in helping us to develop our children's centres and their services, or in telling us what you think about our services now, please contact the centre you attend and they will be happy to hear from you.

The Children's Centre  
4 Walpole Road  
Kings Lynn  
PE30 2DZ  
01553 668505

Office  
St James  
Extons Road  
Kings Lynn  
PE30 5NU

[northlynncc@nchc.nhs.uk](mailto:northlynncc@nchc.nhs.uk)  
[www.surestartnorfolk.co.uk](http://www.surestartnorfolk.co.uk)

Funded by  
 **Norfolk** County Council

Managed by  
Norfolk Community Health and Care   
NHS Trust

# What's on at...

North Lynn, Gaywood North Bank  
and the Woottons (Signpost)

**Sure Start Children's Centres**

**Free activities in Summer Holidays 2018**

*We aim to make our activities inclusive for all children regardless of ability. If you or your child has any specific needs or require additional support to access our services, please do not hesitate to contact us to discuss this.*

We offer a wide range of activities to benefit children aged 0-5 years.

Mums, dads, carers, childminders, grandparents and, of course, little ones are all welcome!

Find us on Facebook



For lots more information log onto our website at  
[www.surestartnorfolk.co.uk](http://www.surestartnorfolk.co.uk)

